





Certificate of Analysis

SALSA® MLPA® Probemix P111 FCGR mix 2

Catalogue #	P111-025R, P111-050R, P111-100R	
Product name	Probemix P111 FCGR mix 2	
LOT	C1-1019	
	25, 50, or 100 reactions.	
Shipping conditions	Dry ice or cooling elements.	
	Store upon arrival between -25°C and -15°C.	
	Expiration date: October 2024, when stored at recommended conditions. This product should not be frozen/thawed more than 25 times.	
Use	This product has been developed for the detection of genomic rearrangements and point mutations in the 180 kb FCGR2/3 locus at chromosome 1q23.3, as described in Table 1, 2 and 3 of the product description. This probemix is designed for use only in combination with SALSA MLPA reagent kits and Coffalyser.Net as described in the MLPA General Protocol.	
Quality control specifications	<ul style="list-style-type: none"> - Sufficient distance between peaks, absence of extra or shoulder peaks, and completeness of hybridisation of each individual probe, as tested on Applied Biosystems and Beckman/SCIEX GeXP sequencers. - Standard deviation of each individual reference probe ≤ 0.10, when tested on 23 different DNA samples of healthy individuals, extracted by various methods. - No DNA controls result in only five major peaks shorter than 121 nucleotides (nt): four Q-fragments at 64, 70, 76 and 82 nt, and one 19 nt peak corresponding to the unused portion of the fluorescent PCR primer. Non-specific peaks longer than 121 nt AND with a height <25% of the median of the four Q-fragments are not expected to affect MLPA reactions when sufficient (50-250 ng) sample DNA is used. 	<p>Test result</p> <p style="text-align: center; font-weight: bold;">PASS</p>

None of the ingredients are derived from humans, animals, or pathogenic bacteria. Based on the concentrations present, none of the ingredients are hazardous as defined by the Hazard Communication Standard. **A Safety Data Sheet (SDS) is not required for these products:** none of the preparations contain dangerous substances (as per Regulation (EC) No 1272/2008 [EU-GHS/CLP] and amendments) at concentrations requiring distribution of an SDS (as per Regulation (EC) No 1272/2008 [EU-GHS/CLP] and 1907/2006 [REACH] and amendments). If spills occur, clean with water and follow appropriate site procedures.

More information: www.mlpa.com ; www.mlpa.eu	
	MRC-Holland bv; Willem Schoutenstraat 1 1057 DL, Amsterdam, The Netherlands
E-mail	info@mlpa.com (information & technical questions); order@mlpa.com (orders)
Phone	+31 888 657 200

Certificate of Analysis
SALSA MLPA Probemix P111-C1 FCGR mix 2 sample picture

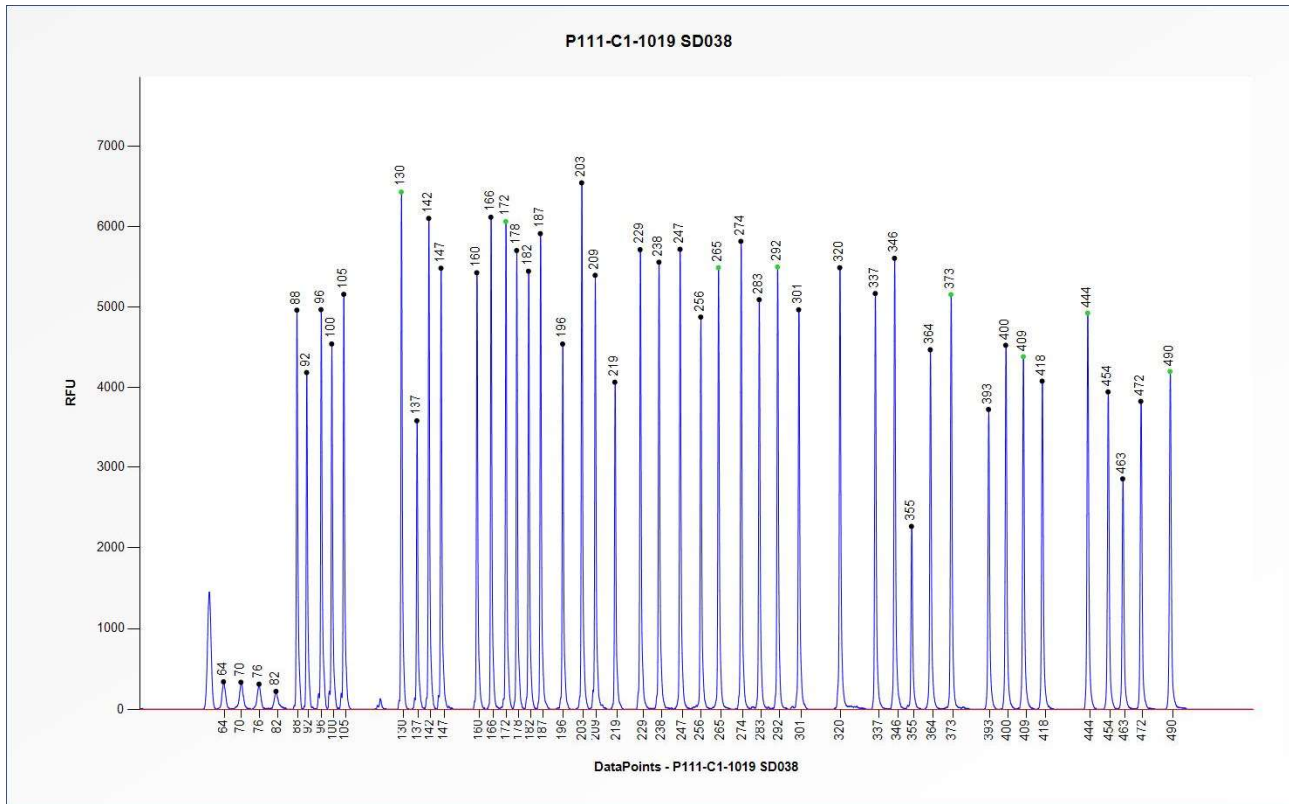


Figure 1. Capillary electrophoresis pattern from SALSA Reference Selection DNA SD038-S02 (approximately 50 ng) analysed with SALSA MLPA Probemix P111 FCGR mix 2 (C1-1019).

This lot was certified by MRC-Holland on 17 June 2020.

This certificate is a declaration of analysis at the time of the manufacturing process. All assays were run in compliance with manufacturer's instructions for use.

Implemented changes in the COA

Version 01 – 17 June 2020 (04)
- Not applicable, new document.