




Certificate of Analysis

SALSA® Binning DNA SD078

Catalogue #	SD078	
Product name	SALSA Binning DNA SD078	
LOT	S01-1021	
	6 reactions.	
Shipping conditions	Dry ice or cooling elements.	
	Store upon arrival between -25 °C and -15 °C.	
	Expiry date: October 2026, when stored at recommended conditions.	
Purpose	To be used with SALSA MLPA Probemix P190-D1 CHEK2, SALSA MLPA reagent kits and Coffalyser.Net™ analysis software as described in the MLPA General Protocol and the corresponding probemix product description.	
Quality control specifications	<ul style="list-style-type: none"> - The mutation-specific probe, as described in the product description, produces a signal at the designed length. - The signal of the mutation-specific probe when tested with wild-type genomic DNA is <5% of the peak height generated when tested with SALSA Binning DNA SD078. - The signal of the mutation-specific probe when tested with SALSA Binning DNA SD078 is at least 15% in peak height of the average probe signal of the 10 neighbouring probes and is not >25% higher than any of the 10 neighbouring probes. - The 105 nt chromosome Y specific control fragment generates a signal on SALSA Binning DNA SD078 which is similar (±20%) to the signal obtained on wild-type male genomic DNA. - All SALSA MLPA Probemix P190-D1 CHEK2 probes, other than the mutation-specific probes, show normal signals, similar (±20%) to the peak pattern obtained on wild-type genomic DNA. 	<p style="text-align: center;">Test result</p> <p style="text-align: center; font-size: 1.5em;">PASS</p>

More information: www.mrcholland.com ; www.mrcholland.eu	
	MRC Holland bv; Willem Schoutenstraat 1 1057 DL, Amsterdam, The Netherlands
E-mail	info@mrcholland.com (information & technical questions) order@mrcholland.com (orders)
Phone	+31 888 657 200

Certificate of Analysis

SALSA® Binning DNA SD078 sample pictures

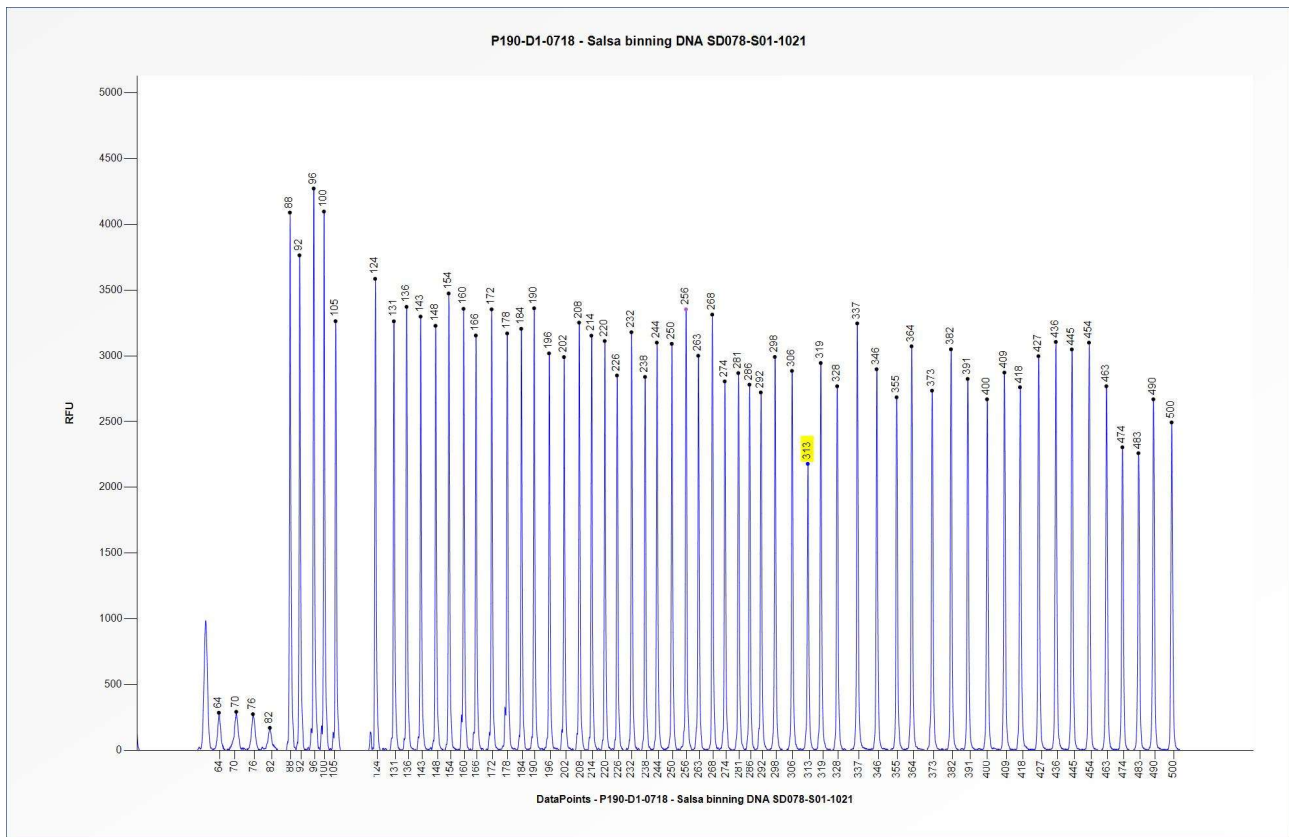


Figure 1. Capillary electrophoresis pattern from SALSA Binning DNA SD078-S01-1021 (approximately 50 ng) analysed with SALSA MLPA Probemix P190 CHEK2 (D1-0718). The location of the CHEK2 1100delC mutation-specific probe at 313 nt is indicated. Probe peak heights may vary between different lots of the P190-D1 probemix.

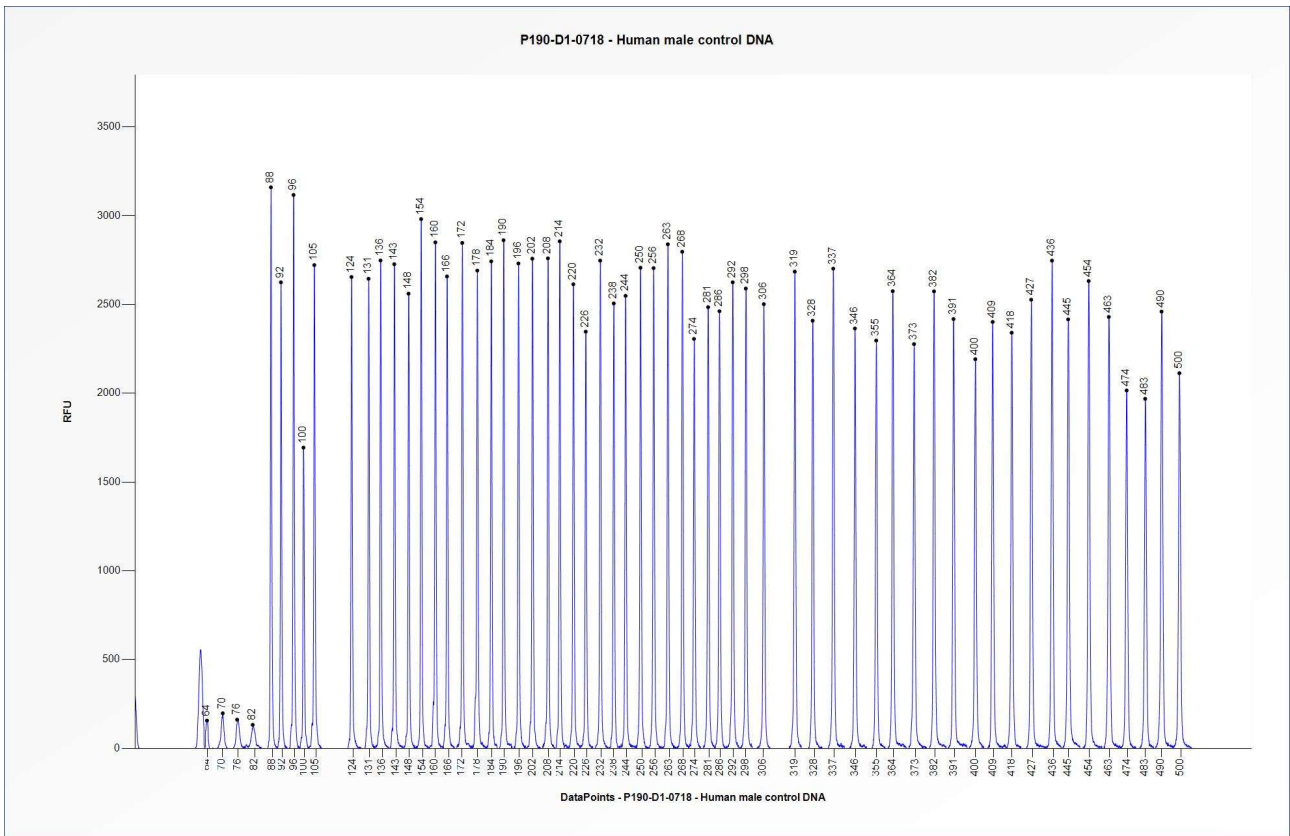


Figure 2. Capillary electrophoresis pattern from a sample of approximately 50 ng human male control DNA analysed with SALSA MLPA Probemix P190 CHEK2 (D1-0718). Probe peak heights may vary between different lots of the P190-D1 probemix.

This lot was certified by MRC Holland on 13 January 2022.

This certificate is a declaration of analysis at the time of the manufacturing process. All assays were run in compliance with manufacturer’s instructions for use.

Implemented changes in the COA

Version 01 – 17 January 2022 (05)
 - Not applicable, new document.